

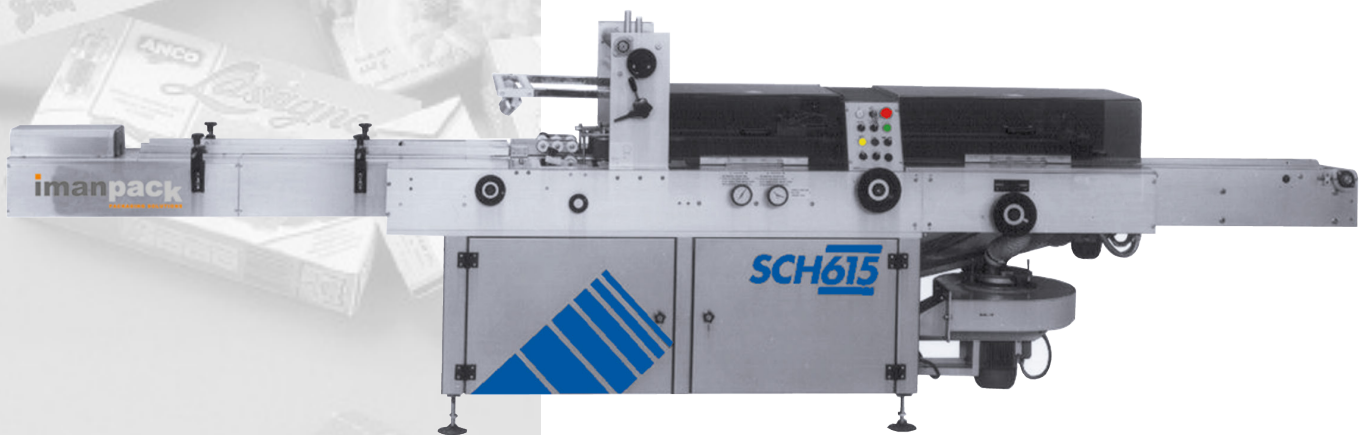
# imanpack

PACKAGING & ECO SOLUTIONS

## SCH 615

### Continuous Flow-wrapper (HFFS) for trays

Continuous automatic wrapping machine for PVC or expandable polyethylene film. Suitable for packaging foodstuffs on plastic trays or tubs.



#### Tray dimensions

Length: from 100 to 550 mm  
Width: from 90 to 200 mm

#### Product dimensions

Height: from 15 to 120 mm

#### Film width

Up to 500 mm

#### Speed

From 30 to 100 pack./min



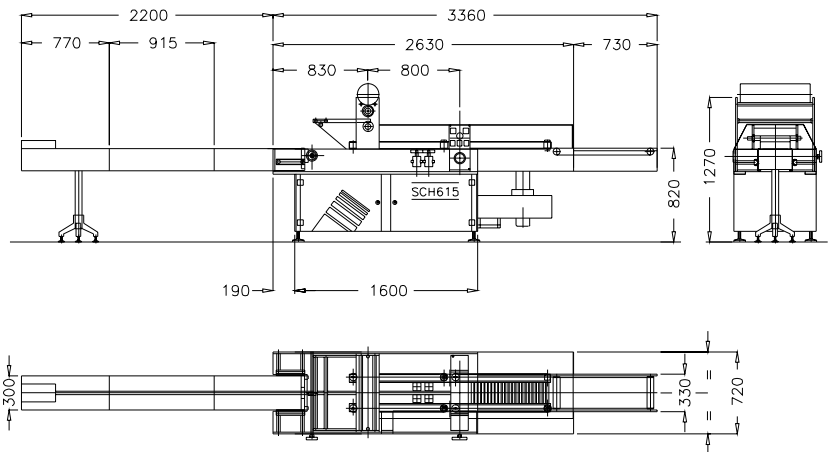


## TECHNICAL FEATURES

- Modular structure in stainless steel.
- Feeder conveyor belt 2300 mm in length.
- Motorised reel holder with a system that compares the speed with that of the drive wheels to obtain the first expansion of the film in a longitudinal direction.
- Reel holder axis for films up to 500 mm wide.
- Drive wheels and sealing wheels in stainless steel with electronic temperature control system.
- Longitudinal folding unit with suction and mechanical folding system.
- Feeding conveyor belt with side guides to keep the product in position. Adjustable in height featuring a hand-wheel controlled centring system.
- Transversal cutting with toothed blade system.
- Discharge conveyor belt with teflon and lower heated plates.
- Package length controlled by variable-speed motor.
- Machine speed controlled by inverter.
- Safety protections and noise reduction system.
- Machine built according to CE Standards.

## ACCESSORIES

- Feeder conveyor belt extension.
- Film centring photocell.
- Automatic feeder system.
- Electronic version for automatic package size change-over.



layout

# imanpack

PACKAGING & ECO SOLUTIONS

Via Lago di Bolsena, 19 36015 Schio (VI) ITALY  
 Tel. +39.0445.578.811 Fax+39.0445.575.111  
 www.imanpack.it email: info@imanpack.it